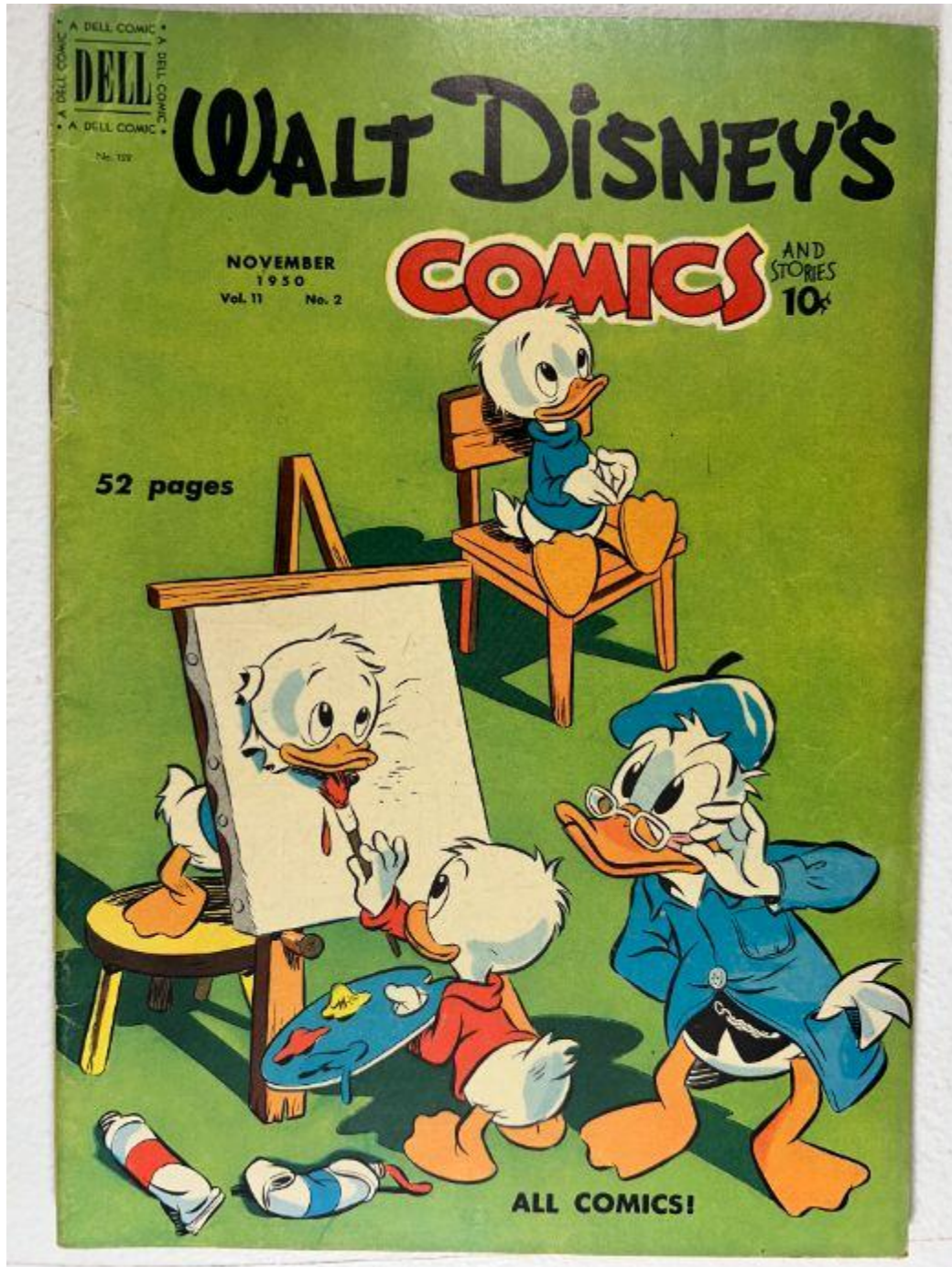


# Walt Disney's Comics and Stories – Vol. 11 No.2 (November 1950)

Evaluation Date: April 5, 2026



# SUMMARY OF OBSERVATIONS

*Walt Disney's Comics and Stories – Vol. 11 No. 2 (November 1950)*

The front cover presents as a visually striking copy with excellent retained green background color and strong, well-defined character artwork. Huey, Dewey, and Louie are shown painting a portrait while Donald Duck looks on, rendered with crisp linework and high color saturation. The masthead lettering remains bold and fully legible, and overall cover gloss appears well preserved. Closer inspection reveals minor wear localized along the bottom edge near the spine and along the spine fold itself. In these areas, shallow paper abrasion and compression are visible, presenting as light fiber exposure rather than significant paper loss.

Interior examination confirms a complete and intact book. The inside front cover and interior pages display uniform cream-to-light-tan toning consistent with early-1950s Dell Comics paper stock, darkening toward the outer margins but without staining, moisture disturbance, or writing. Interior color printing remains vivid and well aligned across the photographed pages. The centerfold remains attached at both staples. Both staples are present and seated; **light surface rust is visible on both the upper and lower staples**, presenting as brownish discoloration along portions of the exposed staple legs without flaking or heavy buildup. Surrounding paper at the staple areas shows light compression but no pull-through or tearing. The spine exhibits light rubbing and compression without splitting. The brittleness test image shows the paper flexing smoothly without visible fiber fracture, indicating retained flexibility for the age.

---

## FRONT COVER — OBSERVATIONS

*Walt Disney's Comics and Stories – Vol. 11 No. 2 (November 1950)*

### Photo Validation (img\_2317 Front Cover)

The image is evenly lit, sharply focused, and fully frames the entire front cover, including all edges, corners, and the spine. Resolution is sufficient to clearly evaluate ink clarity, surface wear, edge condition, and paper texture.

### Scene & Composition

The cover depicts Huey, Dewey, and Louie painting a portrait of themselves while Donald Duck looks on, set against a solid green background. The composition is centered beneath the series masthead, with characters occupying the majority of the cover field.

### Findings

Cover colors remain vibrant and evenly saturated with no visible fading. The masthead lettering and logo remain intact and legible. Along the **bottom edge near the spine corner**, light abrasion is visible, presenting as shallow rubbing with exposed fiber tips over approximately **~15–18 mm**. The **spine fold** shows minor compression and surface stress, with flattened fibers extending approximately **~18–22 mm**, most noticeable near the lower half. Corners exhibit light rounding, slightly heavier at the lower corners, without paper loss. No writing, stains, tears, or large creases are visible on the front cover.

## Overall Impression

The front cover is visually strong with excellent color and only minor localized edge and spine wear.

---

## BACK COVER — OBSERVATIONS

*Walt Disney's Comics and Stories – Vol. 11 No. 2 (November 1950)*

### Photo Validation (img\_2318 Back Cover)

The photograph is evenly lit and in focus, showing the entire back cover, edges, corners, and spine edge clearly.

### Findings

The back cover exhibits uniform tan/cream toning consistent with age. Advertising text and artwork remain legible. Light edge wear is visible along the bottom edge over approximately **~20–25 mm**. Corners show general rounding, more evident at the lower corners. Spine-edge wear mirrors that of the front cover, with light rubbing but no splitting or paper loss.

### Overall Impression

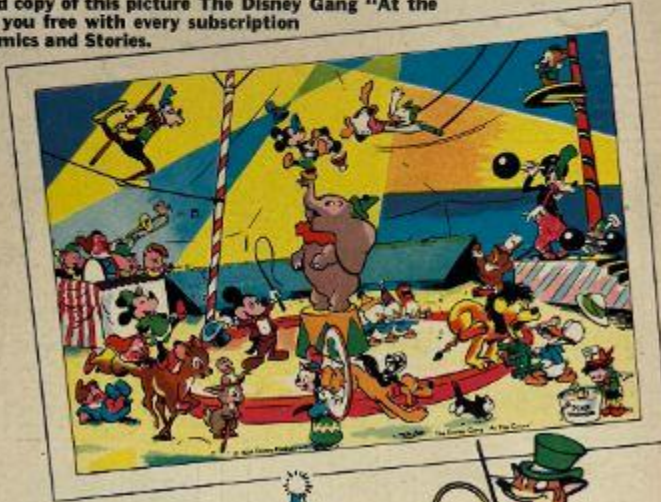
The back cover remains intact with even toning and light, age-appropriate wear only.

# FREE! WALT DISNEY CIRCUS PICTURE



A beautifully colored copy of this picture The Disney Gang "At the Circus" will be sent you free with every subscription to Walt Disney's Comics and Stories.

**SUBSCRIBE  
NOW  
TO  
WALT  
DISNEY'S  
COMICS  
AND STORIES**



Actual size of picture 10 1/2" x 14 1/2"



The only magazine of authentic Disney characters pledged to clean, wholesome humor. It contains the best in art work, coloring and readability. Approved by parents and teachers everywhere. Suitable for everyone, from ages 3 to 30.

Mail to: K. K. PUBLICATIONS, Inc. Dept. 11 Poughkeepsie, N. Y.

Enclosed please find \$\_\_\_\_\_ for which please send a \_\_\_\_\_ year subscription to **WALT DISNEY'S COMICS AND STORIES** and the Free Circus Picture to:

PLEASE PRINT  
Name \_\_\_\_\_  
Street and Number \_\_\_\_\_  
City or Town \_\_\_\_\_ Mailing Dist. No. \_\_\_\_\_ State \_\_\_\_\_  
Donor's Name \_\_\_\_\_  
Street and Number \_\_\_\_\_  
City or Town \_\_\_\_\_ Mailing Dist. No. \_\_\_\_\_ State \_\_\_\_\_

**SUBSCRIPTION RATES**  
5 years—\$4.00      1 year—\$2.50      2 years—\$1.75      1 year—\$1.00



# INSIDE FRONT COVER — OBSERVATIONS

Walt Disney's Comics and Stories – Vol. 11 No. 2 (November 1950)

## Photo Validation (img\_2319 Inside Front Cover)

The image is straight-on, in focus, and clearly displays the inside front cover and hinge area.



## Findings

Paper color is cream. No writing, stamps, subscription marks, or stains are visible. The hinge shows light compression but no tearing or separation. The indicia is visible and legible, confirming publication details.

## Overall Impression

The inside front cover is clean and well preserved.

---

## INTERIOR PAGES — OBSERVATIONS

*Walt Disney's Comics and Stories – Vol. 11 No. 2 (November 1950)*

### Photo Validation (img\_2320–img\_2323 Inside Pages)

Interior page images are clear, evenly lit, and in focus, with margins, gutters, and panels fully visible.

### Page Color

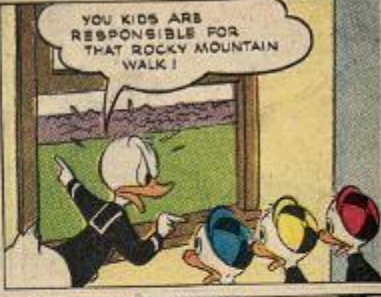
Cream to light tan.

### Findings

Interior pages show uniform age-related toning, darkening toward the margins by approximately **~5–7 mm**. Color printing remains vivid and well aligned. Minor edge waviness is visible on some pages, consistent with age. Page corners show slight softening with no missing pieces. No interior writing, stains, or tears are visible. Gutters remain intact.

### Overall Impression

Interior pages are complete, clean, and visually strong with minimal age-consistent wear.









# CENTERFOLD — OBSERVATIONS

Walt Disney's Comics and Stories – Vol. 11 No. 2 (November 1950)

## Photo Validation (img\_2324 Centerfold)

The image clearly shows the centerfold, fold line, and both staples.



## Findings

The centerfold remains attached at both staples. The fold shows mild compression with no tearing or separation. No staple pull-through is visible.

## Overall Impression

The centerfold is secure and stable.

---

## SPINE — OBSERVATIONS

*Walt Disney's Comics and Stories – Vol. 11 No. 2 (November 1950)*

### Photo Validation (img\_2326 Spine)

Side-profile image clearly shows the full spine length and adjacent cover edges.



## Findings

The spine shows light rubbing and compression along the fold, with flattened fibers extending approximately **~18–22 mm**, more noticeable toward the lower half. No full spine split is visible. Spine alignment remains straight.

## Overall Impression

Spine condition is stable with light wear only.

---

# STAPLES — OBSERVATIONS

*Walt Disney's Comics and Stories – Vol. 11 No. 2 (November 1950)*

## Upper Staple

### Photo Validation (img\_2327 Upper Staple)

Macro image is clear and well lit, showing the staple and surrounding paper.



### Findings

The upper staple is seated and intact. **Light surface rust is visible along portions of the exposed staple legs**, presenting as brownish discoloration without flaking or heavy buildup. Surrounding paper shows light compression extending approximately **~3–4 mm** from the staple legs. No pull-through, tearing, or rust migration into the surrounding paper is visible.

### Overall Impression

Upper staple remains structurally intact, with **light surface oxidation present but no associated paper damage**.

## Lower Staple

### Photo Validation (img\_2328 Lower Staple)

Macro image clearly frames the staple, spine fold, and adjacent paper.



### Findings

The lower staple remains embedded. **Light surface rust is visible along the staple legs**, slightly more apparent than on the upper staple, presenting as brown discoloration without flaking. Surrounding paper shows light compression extending approximately **~3–4 mm**, with no tearing, pull-through, or detachment observed.

### Overall Impression

Lower staple is intact, with **visible light oxidation but no structural compromise**.

---

# BRITTLENESS TEST — OBSERVATIONS

*Walt Disney's Comics and Stories – Vol. 11 No. 2 (November 1950)*

## Photo Validation (img\_2329 Brittleness Test)

The image clearly shows an interior page being flexed, with adequate lighting and focus.



## Findings

The page bends in a smooth arc without visible fiber cracking, flaking, or fragmentation.

## Overall Impression

The tested page demonstrates retained flexibility.